

GLS-1500 - Laser Scanner / IS-3 Imaging Station



The GLS-1500 gives high quality observations with effective and simple field operation. With a scan range up to 330m the GLS is a versatile tool that lets you work many different environments. The stand-alone capability of this instrument easily manages the extremes of the measurement world.

Emphasising the benefits of laser scanning on site, you are not tied to a PC, you do not have to worry about power and site work is easy because you are only dealing with one box. However you can always connect to the PC with the ScanMaster Software or Tablet with the ScanMaster Field software and see the data as it is being collected at up to 30,000 points per second.



KEY FEATURES - GLS-1500

- Consistent 4 mm precision
- Precise Scan Technology
- 330m maximum range
- Class 1 eye safe laser
- Integrated camera

IMAGING



KEY FEATURES - IS-3

- Two Digital Cameras – Wide Angle and 30x optical zoom
- iSCAN Technology – Intelligent Scanning up to 20 points p.s.
- iDRIVE – touch screen control
- 2000m reflectorless measurement
- iCONTROL – WiFi Remote Control by PC or Field Controller



IS-3 – Advanced imaging and high accuracy – in one. Take the power, accuracy and speed of the unsurpassed Topcon robotic technology, add our superb imaging capacity with 20 points per second scanning and 2 cameras, and you have the IS-3 – a revolutionary approach to complete job site documentation. Capture discrete points with images, or scan key features to get a clear overview of exactly what was measured and where.

Fast iSCAN measurement routines enable a thorough data collection to define your subject in real-time data as 'photography with dimension'. Options include Feature Detection or Grid Scan to automatically measure significant points or a "regular" grid defined by rectangle, polygon, section or complete 360°.

With its exclusive coaxial 30x telescopic zoom, ImageMaster software, Superior X-TRAC8 tracking technology and integrated WiFi robotic data communications – the IS-3 is the most advanced, longest range, and most powerful imaging station of its time.

Topcon's IS-3 showcases our proven robotic technology. Its wide angle dual digital Imaging cameras allow you to view your data in-situ from a full colour, real-time image on a touch sensitive LCD display. Navigate around your point and zoom in to measure up to 2000m away, and be confident that the point you see on the screen, is the point you see through the telescope thanks to digital imaging precision from Topcon.



IS-3 – Imaging Station

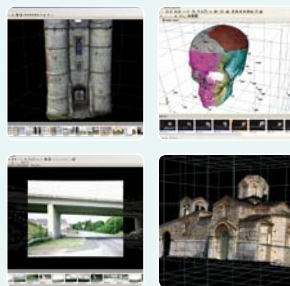
ImageMaster / ScanMaster Office Software



Pictures and Pointclouds all in one location! ImageMaster Pro is the revolutionary approach to get the full picture and meaningfully represent your 3D data. Combining our proven software based photogrammetric tools with the management of scanner and total station data; it enables you to read remotely sensed and physically measured information in a single software environment. In one simple process, your

3D data is turned into a snapshot of reality bringing your project to life.

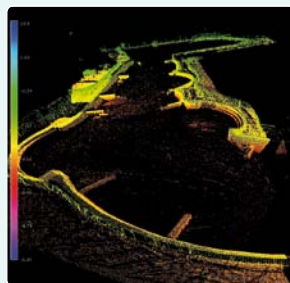
ImageMaster Photo creates 3D models from stereo images from an “off-the-shelf” cameras & measured individual points and can quickly generate contour lines, points, polylines and surface measurements-fast, powerful, effective and accurate.



KEY FEATURES - ImageMaster

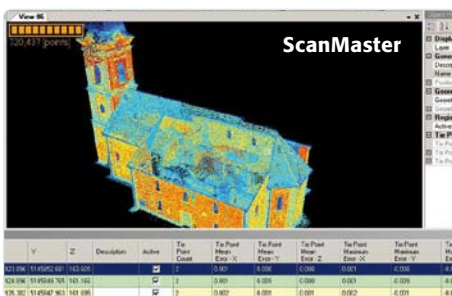
- Effective & simple desktop Photogrammetry with professional quality output
- Clear step-by-step interface
- Make your “Off-the-shelf” digital camera a measurement tool
- Complete Imaging data management – Combines Images, points & pointclouds in a single software
- Produce models with accuracies up to 0.4 mm

IMAGING



KEY FEATURES - ScanMaster

- High volume scan and imaging data management
- Intuitive and User-friendly solution
- Automated Data extraction
- Mass 3D pointcloud acquisition and manipulation
- Compatible with many data formats



ScanMaster – Office Software

Let the points paint the picture!

ScanMaster is the fast, efficient way to handle mass 3D data and turn it into easy-read images that keep you and your customers, in the picture. The powerful GLS scanner control and processing software offers a modern, streamlined interface giving the perfect alternative to traditional point-cloud processing techniques.

It's so simple. ScanMaster has been designed to minimize the learning curve for the operator so that the data is the focus NOT the skills of the operator, your project receives the best opportunity of being understood and showcasing your measurement expertise.

Unique tools enable you to extract CAD information directly from the pointcloud, without requiring meshing or TIN creation. Quickly extract sections, profiles, edges from regions; plane intersection; quick polyline sketches. You can easily prepare your data for presentation using slices, noise filtering, re-sampling of clouds. ScanMaster covers everything you need to work with your point-cloud.

ScanMaster Field version is a stripped-down implementation designed for use on Tablet PC, this graphical interface allows you to work with typical survey work-flows whilst viewing your data in 2D spherical view or 3D data view.